

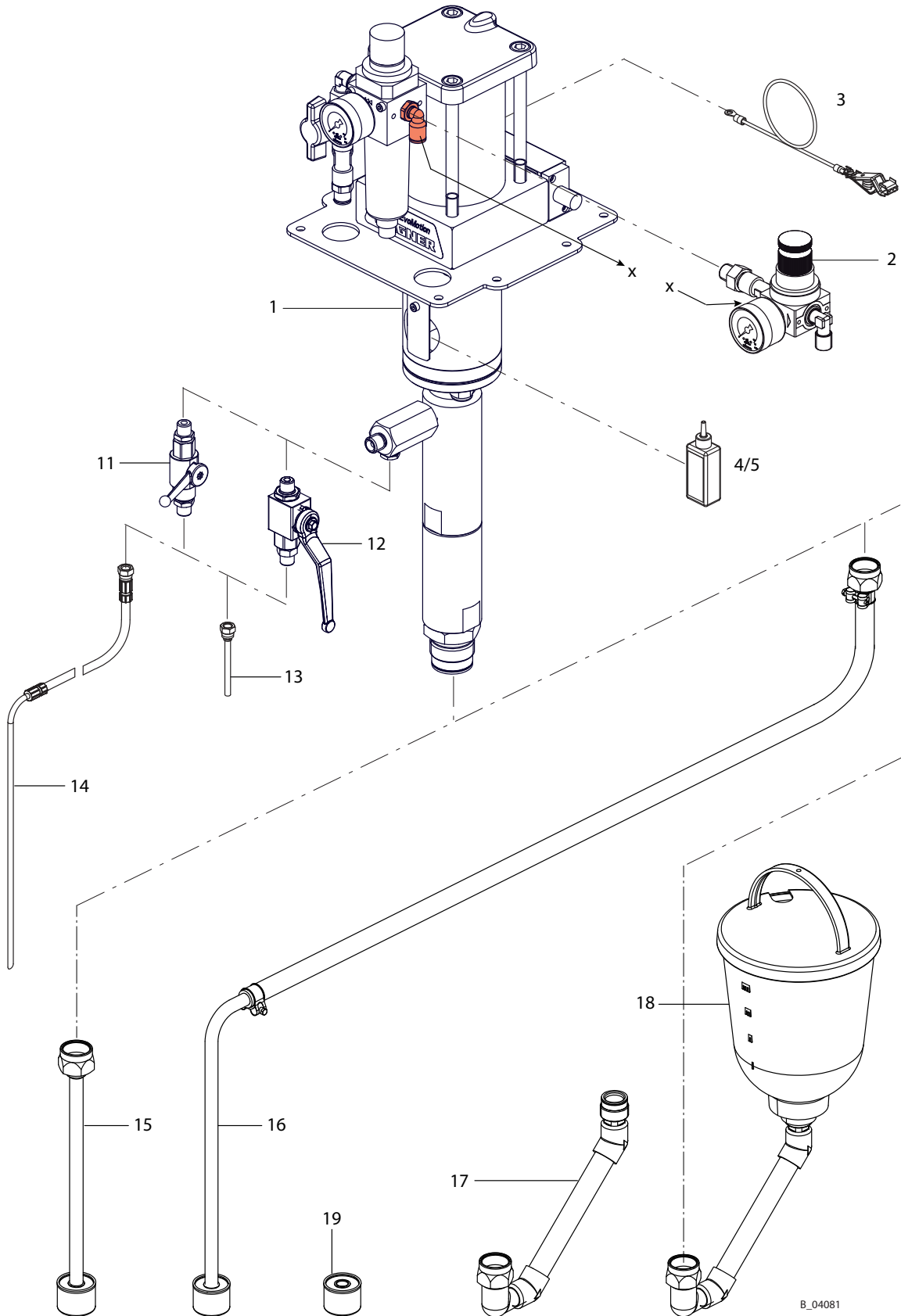
## 10 ACCESSORIES

<b>Accessories</b>		<b>FineFinish 40-15</b>	<b>FineFinish 20-30</b>
<b>Pos K</b>	<b>Designation</b>	<b>Order No.</b>	<b>Order No.</b>
1	Pump PE/T	2329450	2329452
2 ◆	AirCoat regulator set	T6145.00A	
3	Grounding cable, complete 3 m; 9.8 ft	236219	
4	Separating agent 250 ml	9992504	
5	Separating agent 500 ml	9992505	

<b>Material outlet accessories</b>		<b>FineFinish 40-15</b>	<b>FineFinish 20-30</b>
<b>Pos K</b>	<b>Designation</b>	<b>Order No.</b>	
11 ◆	Ball valve R1/4"-G1/4"-PN350-SSt	2334488	
12 ◆	Ball valve R1/4"-G1/4"-PN350-CS	2334472	
13 ◆	Return tube DN6-G1/4"-100mm-PA	2331752	
14 ◆	Return hose DN6-PN310-G1/4"-PA	2329046	

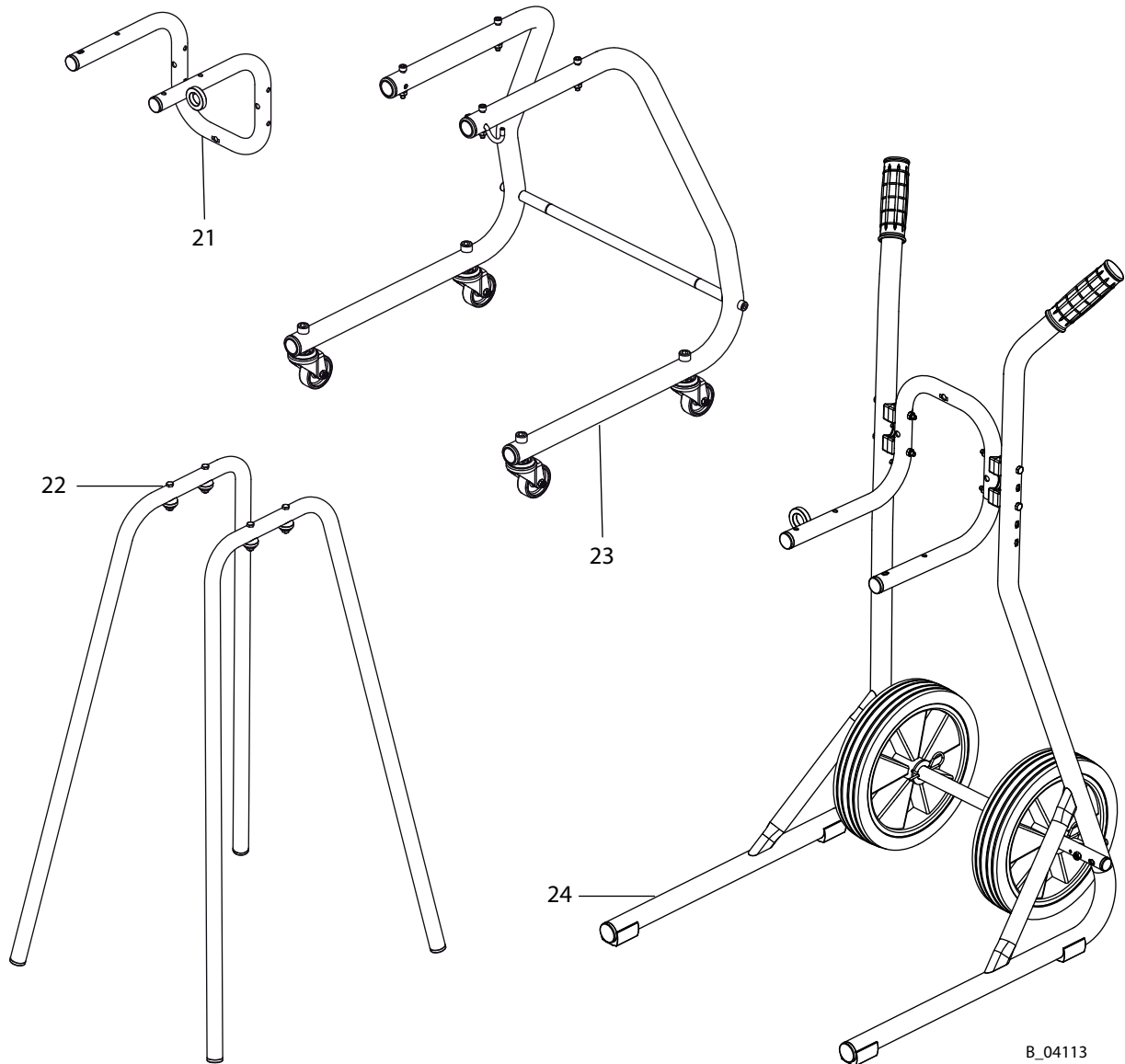
<b>Material inlet accessories</b>		<b>FineFinish 40-15</b>	<b>FineFinish 20-30</b>
<b>Pos K</b>	<b>Designation</b>	<b>Order No.</b>	
15	Suction pipe DN16-SSt, complete	2324158	
16 ◆	Suction hose DN16-SSt, complete	2324110	
17	Suction elbow for top reservoir SSt	2323225	
18 ◆	Top reservoir set, 5 l for piston pump	2332169	
19 ◆	Suction filter DN16-18mesh-SSt	2323396	

◆ Wearing part



B\_04081

Trolley, rack and wall bracket accessories		FineFinish 40-15	FineFinish 20-30
Pos	K	Designation	
		Order No.	
21		Wall mount 4", complete	
22		4-leg stand	
23		Trolley, 4 wheels	
24		Trolley 4", complete	



B\_04113

## 11 SPARE PARTS

### 11.1 HOW CAN SPARE PARTS BE ORDERED?

Always supply the following information to ensure delivery of the right spare part:

#### **Order number, designation, and quantity**

The quantity need not be the same as the number given in the quantity column "**Stk**" on the lists. This number merely indicates how many of the respective parts are used in each component.

The following information is also required to ensure smooth processing of your order:

- Billing address
- Delivery address
- Name of the person to be contacted in the event of any queries
- Type of delivery (normal mail, express delivery, air freight, courier, etc.)


#### **Identification in spare parts lists**

Explanation of column "**K**" (labeling) in the following spare parts lists:

- ◆ Wearing parts

**Note:** No liability is assumed for wearing parts.

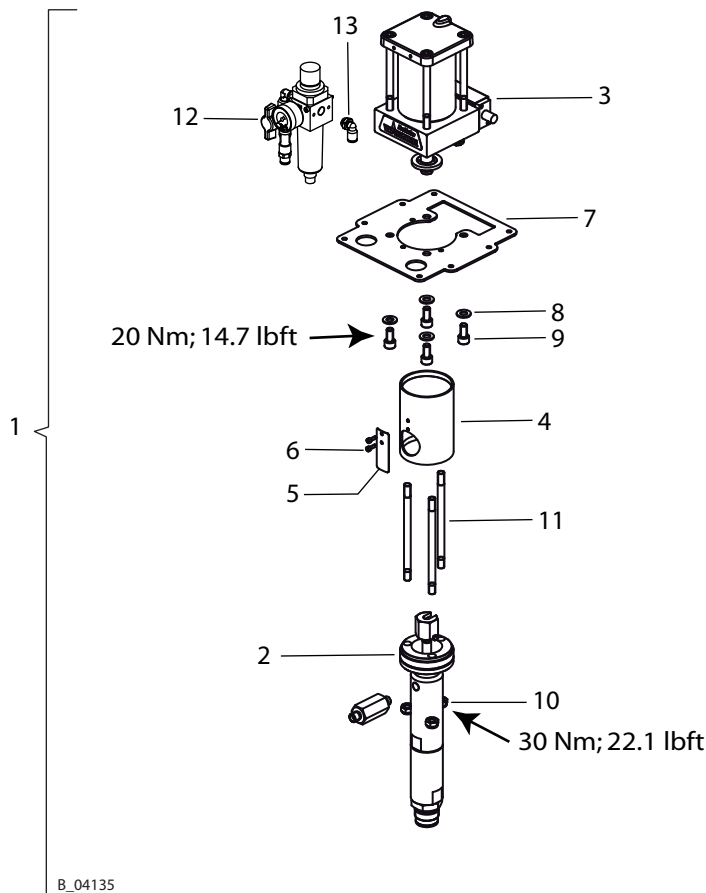
- Not part of the standard equipment but available as a special accessory.

	<p><b>WARNING</b></p> <p><b>Incorrect maintenance/repair!</b> Risk of injury and equipment damage.</p> <ul style="list-style-type: none"> <li>→ Have repairs and part replacements carried out only by specially trained staff or a WAGNER service center.</li> <li>→ Before all work on the device and in the event of work interruptions:             <ul style="list-style-type: none"> <li>- Switch off the energy/compressed air supply.</li> <li>- Relieve the pressure from the spray gun and device.</li> <li>- Secure the spray gun against actuation.</li> </ul> </li> <li>→ Observe the operating manual and service instructions at all times when carrying out work.</li> </ul>
---	--

**11.2 OVERVIEW OF THE COMPONENTS**

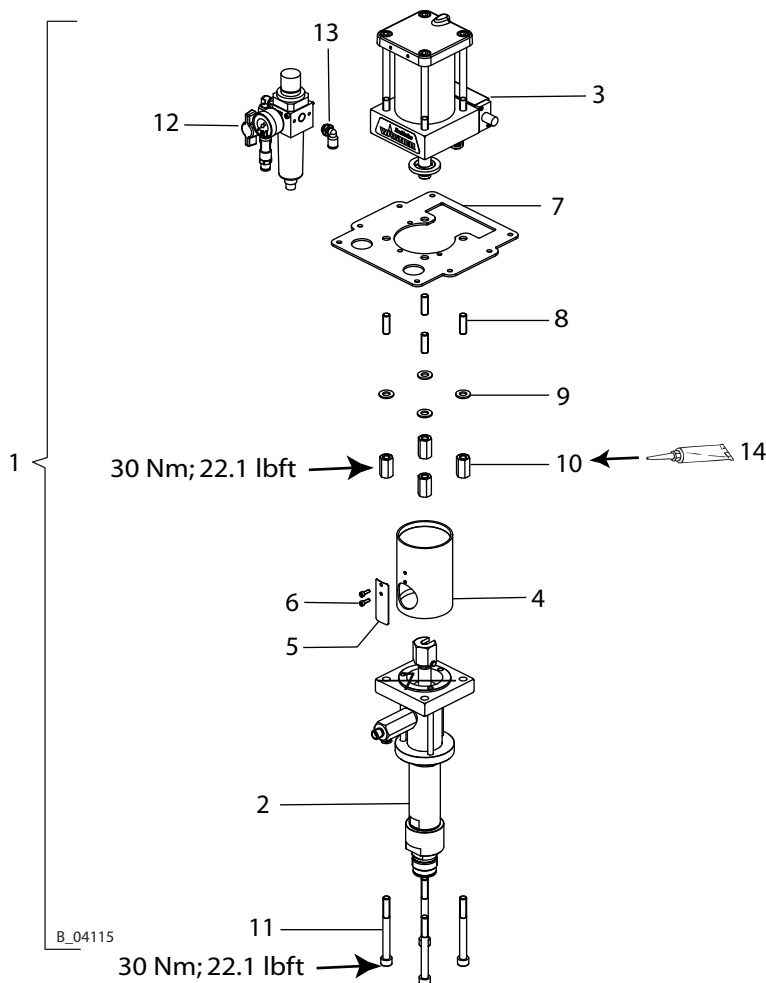
**11.2.1 COMPONENTS FOR FINEFINISH 40-15**

Pos	Designation	Stk	FineFinish
			40-15
			Order No.
1	FineFinish 40-15 PE/T	1	2329450
2	Fluid section 15 PE/T EM	1	2329635
3	Air motor M80 EM	1	U3B08018060
4	D 25 X 160 Spacer	1	A359.71A
5	Safety fixture spacer	1	E516.71A
6	Hexagon socket head cap screw	2	9900353
7	Holder plate	1	2332394
8	Washer	4	9920106
9	Hexagon socket head cap screw	4	9900330
10	Hexagon nut with clamp	3	3055157
11	Tie rod	3	H115.62
12	Pump air regulator set	1	T6140.00A
13	Screwing in angle	1	9998253





**11.2.2 COMPONENTS FOR FINEFINISH 20-30**

Pos	Designation	Stk	FineFinish
			20-30
			Order No.
1	FineFinish 20-30 PE/T	1	2329452
2	Fluid section 30 PE/T EM	1	2329639
3	Air motor M80 EM	1	U3B08018060
4	D 25 X 160 Spacer	1	A359.71A
5	Safety fixture spacer	1	E516.71A
6	Hexagon socket head cap screw	2	9900353
7	Holder plate	1	2332394
8	Threaded bolt	4	9901115
9	Washer	4	9920106
10	Hexagon extension nut	4	2332990
11	Hexagon socket head cap screw	4	9906024
12	Pump air regulator set	1	T6140.00
13	Screwing in angle	1	9998253
14	Loctite 222 50ml; 50cc	1	9992590



**11.3 AIR MOTOR**

	 <b>WARNING</b>
	<p><b>Incorrect maintenance/repair!</b> Risk of injury and equipment damage.</p> <p>→ Have repairs and part replacements carried out only by specially trained staff or a WAGNER service center.</p> <p>→ Before all work on the device and in the event of work interruptions:</p> <ul style="list-style-type: none"> <li>- Switch off the energy/compressed air supply.</li> <li>- Relieve the pressure from the spray gun and device.</li> <li>- Secure the spray gun against actuation.</li> </ul> <p>→ Observe the operating manual and service instructions at all times when carrying out work.</p>

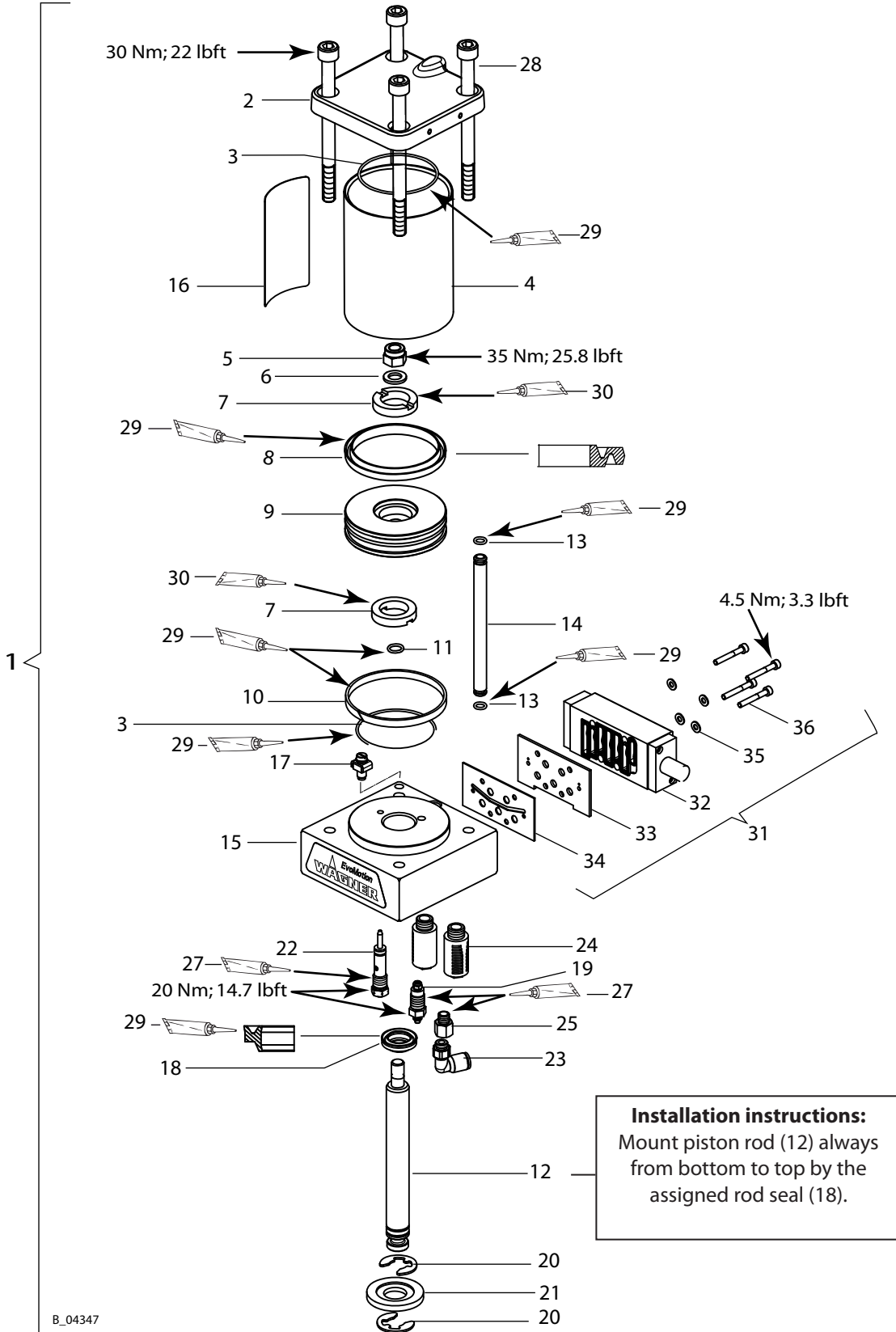
**Air motor spare parts list EM M80**

Pos	K	Designation	Stk	FineFinish	FineFinish
				40-15	20-30
				Order No.	
1		Air motor EM M80	1	U3B08018060	
2		Motor flange, upper, M50 EM	1	F132.91C	
3	◆ ★	O-ring	2	L108.06	
4		Cylinder motor	1	D608.81	
5		Hexagon nut with clamp	1	3055157	
6		Washer	1	9920106	
7	◆ ★	Steamer	2	G903.06	
8	◆ ★	Gasket DE 80	1	L413.06	
9		Motor piston	1	A164.01	
10	◆ ★	Sliding ring	1	L802.08	
11	◆ ★	O-ring	1	L110.06	
12		Piston rod, M80 EM	1	D404.12	
13	◆ ★	O-ring	2	L109.06	
14		Air tube, M80 EM	1	A408.12	
15		Motor flange, complete M80 EM, at bottom	1	T616.00C	
16		Type plate	1	--	
17		Grounding, complete	1	367258	
18	◆ ★	Rod seal	1	L403.06	
19	◆ ★	Sensor below, M80	1	T703.00	
20		Lock washer for shaft	2	K606.02	
21		Washer	1	A160.01A	
22	◆ ★	Pilot valve	1	369290	
23		Threaded elbow fitting	1	9992757	
24	◆	Silencer	2	H505.07	
25		Reducing nipple	1	M432.00	

◆ = Wearing part

★ = Included in service set

● = Not part of the standard equipment but available as an accessory.



B\_04347



**Air motor spare parts list EM M80**

Pos	K	Designation	Stk	FineFinish	FineFinish
				40-15	20-30
				Order No.	
27		Loctite 542	1	9992831	
28		Hexagon socket head cap screw	4	9907241	
29		Mobilux EP 2 grease	1	9998808	
30		Loctite 480	1	9998157	
31	◆	Reversing valve ISO N/1 (consisting of items 32 to 36)	1	P498.00KNE	
32	◆	Reversing valve (spare parts list, see Chapter 11.3.1)	1	P498.00	
33		Valve plate	1	A818.71B	
34	◆	Valve sealing	1	G735.06AB	
35		Washer, A4.3	4	9920104	
36		Hexagon socket head cap screw	4	9900386	
● Service set EM Air motor M80			1	T910.00	

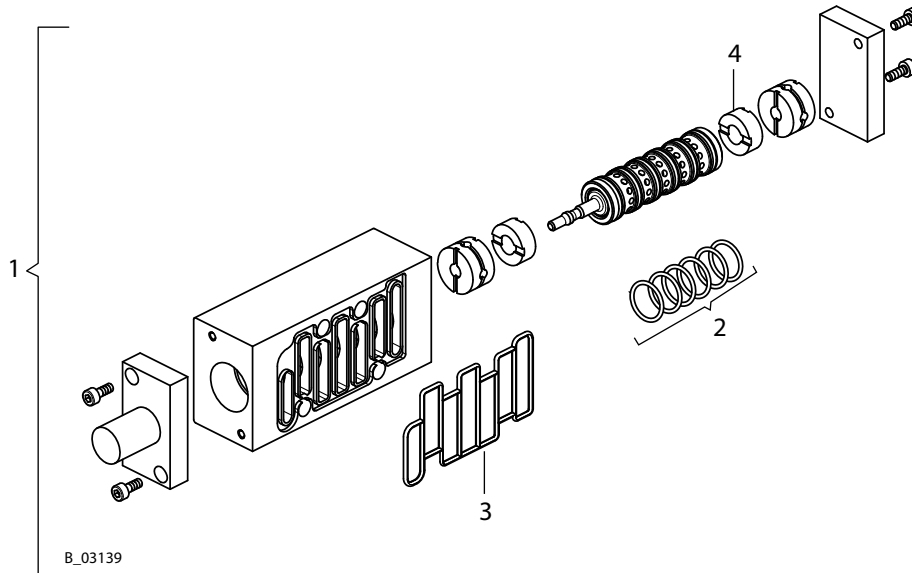
◆ = Wearing part

★ = Included in service set

● = Not part of the standard equipment but available as an accessory.

	 <b>WARNING</b>
	<p><b>Incorrect maintenance/repair!</b> Risk of injury and equipment damage.</p> <ul style="list-style-type: none"> <li>→ Have repairs and part replacements carried out only by specially trained staff or a WAGNER service center.</li> <li>→ Before all work on the device and in the event of work interruptions: <ul style="list-style-type: none"> <li>- Switch off the energy/compressed air supply.</li> <li>- Relieve the pressure from the spray gun and device.</li> <li>- Secure the spray gun against actuation.</li> </ul> </li> <li>→ Observe the operating manual and service instructions at all times when carrying out work.</li> </ul>

**11.3.1 REVERSING VALVE**

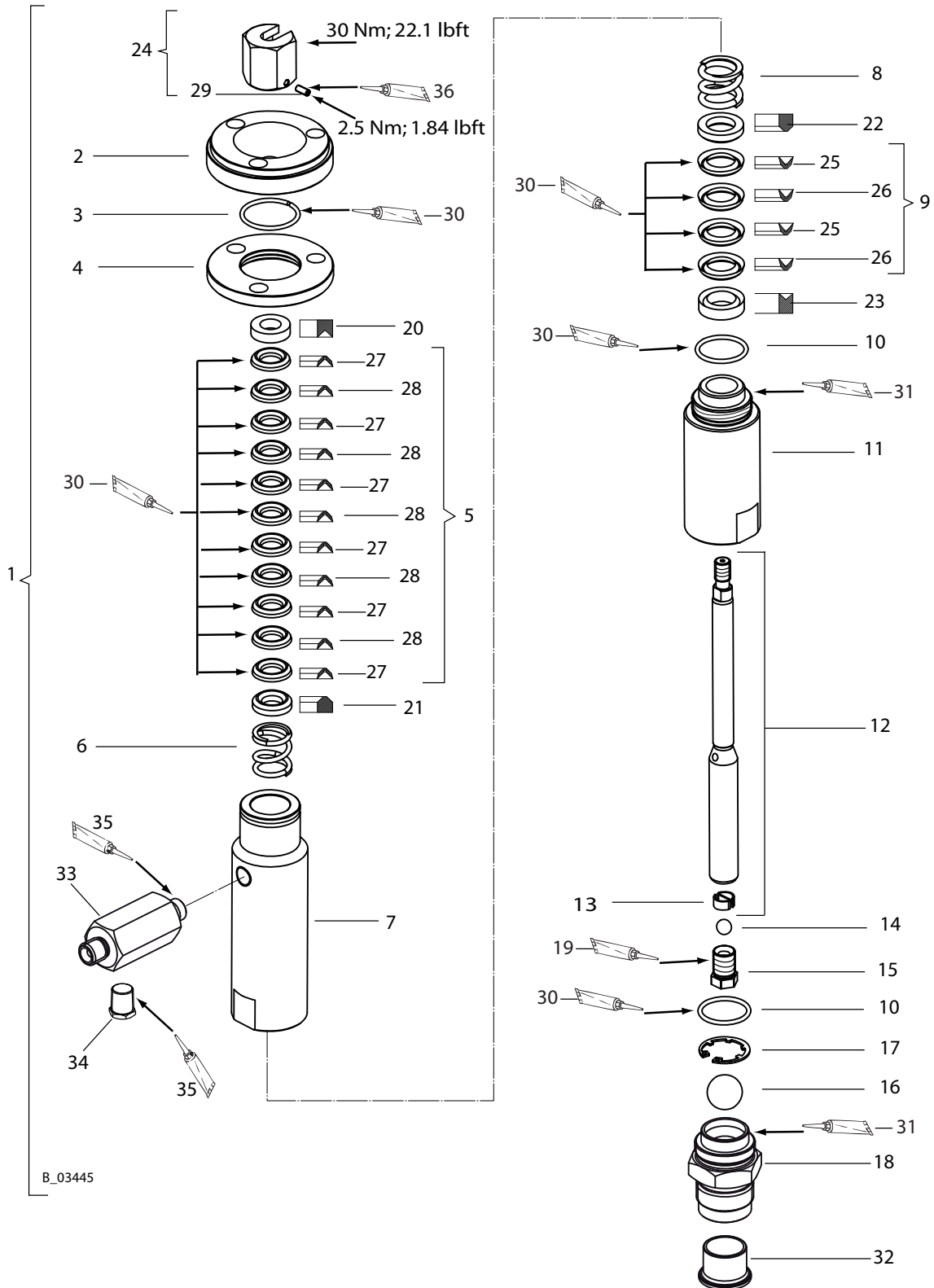


Spare parts list for the reversing valve				FineFinish 40-15	FineFinish 20-30
Pos	K	Designation	Stk	Order No.	
1	◆	Reversing valve	1	P498.00	
2	◆	O-ring	6	9971123	
3	◆	Reversing valve gasket	1	P521.00	
4	◆	Steamer	2	P520.00	

◆ = Wearing part

### 11.4 FLUID SECTIONS

#### 11.4.1 FLUID SECTION 15



**Spare parts list for fluid section 15**

				<b>FineFinish 40-15</b>
<b>Pos</b>	<b>K</b>	<b>Designation</b>	<b>Stk</b>	<b>Order No.</b>
1		Fluid section 15 SS PE/T EM	1	2329635
2		Connecting flange 15	1	A661.12
3		Snap ring	1	K617.03
4		Snap ring flange 15	1	A662.12
5	◆ ★	Packing PE/T 13/25	1	T9037.00E
6		Spring, upper	1	H204.03
7		Tube 15	1	A658.03
8		Spring	1	H203.03
9	◆ ★	Packing PE/T 18/29	1	T9038.00E
10	◆ ★	O-ring	2	L107.06
11		Cylinder 15	1	B534.03
12	◆	Piston 15 SS	1	T6157.00I
13		Support spring	1	A170.03
14	◆	Ball	1	K801.03
15	◆	Valve screw 15	1	A169.03
16	◆	Ball	1	K803.03
17	◆	Securing ring	1	K601.03
18	◆	Inlet housing 15	1	2323838
19	●	Loctite 542	1	9992831
20		Support ring, outside	1	A171.03
21		Support ring, inside	1	A172.03
22		Support ring, inside	1	A411.03
23		Support ring, outside	1	A410.03
24		Connector	1	T6158.00
25	◆ ★	Sealing collar T 18/29	2	G101.05
26	◆ ★	Sealing collar PE 18/29	2	G101.08E
27	◆ ★	Sealing collar T 13/25	6	G104.05
28	◆ ★	Sealing collar PE 13/25	5	G104.08E
29		Hexagon screw without shaft	1	9900136
30		Mobilux EP 2 grease	1	9998808
31	●	Anti-seize paste	1	9992609
32		Sealing sleeve	1	2329898
33		Fitting-DF-MM-R1/4"-1/4"NPS-PN350	1	B0461.03A
34		Hexagon plug	1	2323718
35		Loctite 270	1	9992528
36		Loctite 222	1	9992590

●	Service set EM 15 PE/T	1	T9039.00E
---	------------------------	---	-----------

◆ = Wearing part

★ = Included in service set

● = Not part of the standard equipment but available as an accessory.



**Spare parts list for fluid section 30**

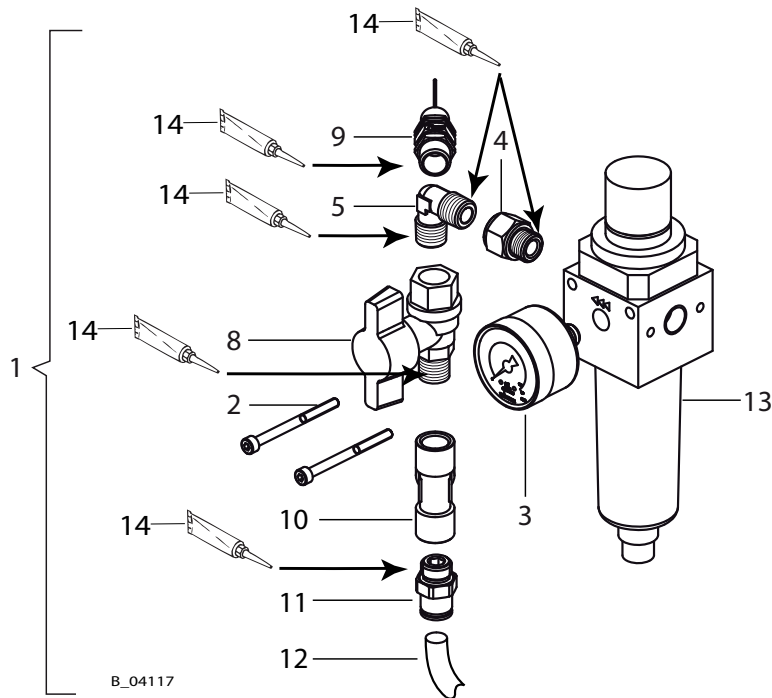
				<b>FineFinish 20-30</b>
<b>Pos</b>	<b>K</b>	<b>Designation</b>	<b>Stk</b>	<b>Order No.</b>
1		Fluid section 30 PE/T, complete	1	2329639
2		Connector	1	T6158.00
3		Hexagon screw without shaft	1	9900136
4		Connecting flange 30	1	B0388.62
5	◆ ★	O-ring	1	L112.06
6	◆ ★	Support ring, outside	1	G119.08
7	◆ ★	Sealing collar PE 18/29	4	G101.08E
8	◆ ★	Sealing collar T 18/29	4	G101.05
9	◆ ★	Support ring, inside	1	G120.08
10	◆ ●	Packing PE/T, complete 18/29	1	T920.00D
11		Support ring plate	1	A114.03
12	◆	Spring	1	H203.03
13	◆ ★	O-ring	2	L170.06
14		Tube 30	1	B0391.03
15		Fitting-DF-MM-R3/8"-1/4"NPS-PN350	1	B0461.03
16		Hexagon plug	1	2323718
17	◆	Piston 30	1	T6181.00
18		Support spring	1	A156.03
19	◆	Ball	1	K802.03
20	◆	Valve screw 30	1	A155.03
21		Lower pump flange	1	B0387.62
22		Hexagon socket head cap screw	3	9907087
23	◆	Pressure spring	1	H222.03
24		Ring	1	B0099.03
25	◆ ★	Support ring, inside	1	G185.05
26	◆ ★	Sealing collar T 25/36	2	G152.05
27	◆ ★	Sealing collar PE 25/36	2	G152.08E
28	◆ ★	Support ring, outside	1	G184.05
29	◆ ●	Packing PE/T, complete 25/36	1	T941.00G
30		Round wire snap ring for waves	1	K640.02
31		Cylinder 30	1	B0392.03
32		Ball stopper	1	A961.03B
33	◆	Ball	1	K803.03
34	◆ ★	O-ring	2	L170.06
35	◆	Inlet fitting	1	2323833
36		Sealing sleeve	1	2329898
37		Valve screw 30	1	B0389.03
41		Loctite 222	1	9992590
42		Mobilux EP 1 grease	1	9998008
43		Loctite 542	1	9992831
44		Anti-seize paste	1	9992609
45		Loctite 270	1	9992528
	●	Service set EM 20 PE/T	1	T940.00G

◆ = Wearing part

★ = Included in service set

● = Not part of the standard equipment but available as an accessory.

**11.5 AIR REGULATOR SET**

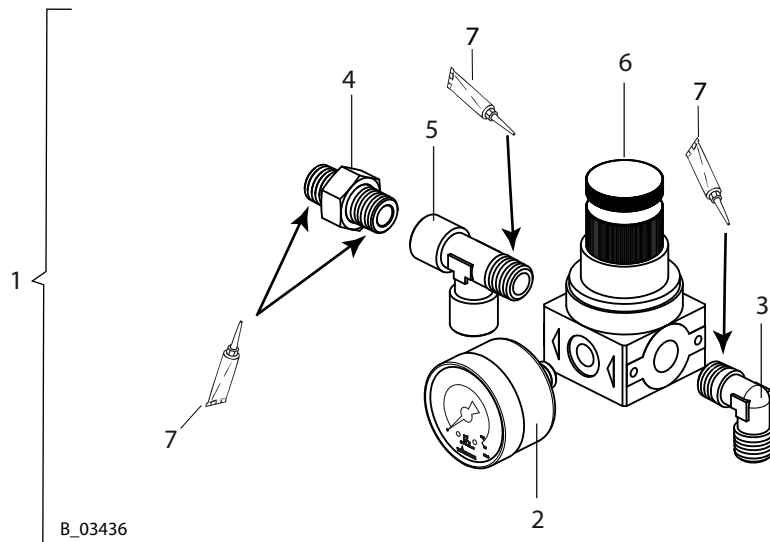


**Spare parts list for air regulator set**

Pos	K	Designation	Stk	FineFinish	FineFinish
				40-15	20-30
				Order No.	Order No.
1		Pump air regulator set	1	T6140.00A	T6140.00
2		Hexagon socket head cap screw	2	9906026	
3	◆	Pressure gage 0-1 MPa; 0-10 bar; 0-145 psi (d40)	1	9998677	
4		Reducer	1	9985682	
5		Screw-in connection's elbow	1	9998039	
8	◆	Ball valve, FM	1	M101.00	
9		Safety valve 1/4"	1	P484.00C1	P484.00C0
10		T-connection	1	M297.00	
11		Straight threaded fitting	1	9992743	
12		Hose, black AD8 x 1.25 (0.32 m; 1.05 ft long)	0.32 m	9982078	
13	◆	Filter regulator, CZ 1/4	1	P124.00M	
14		Loctite 542	1	9992831	

◆ = Wearing part

**11.6 AIR REGULATOR SET FOR AIRCOAT AIR**

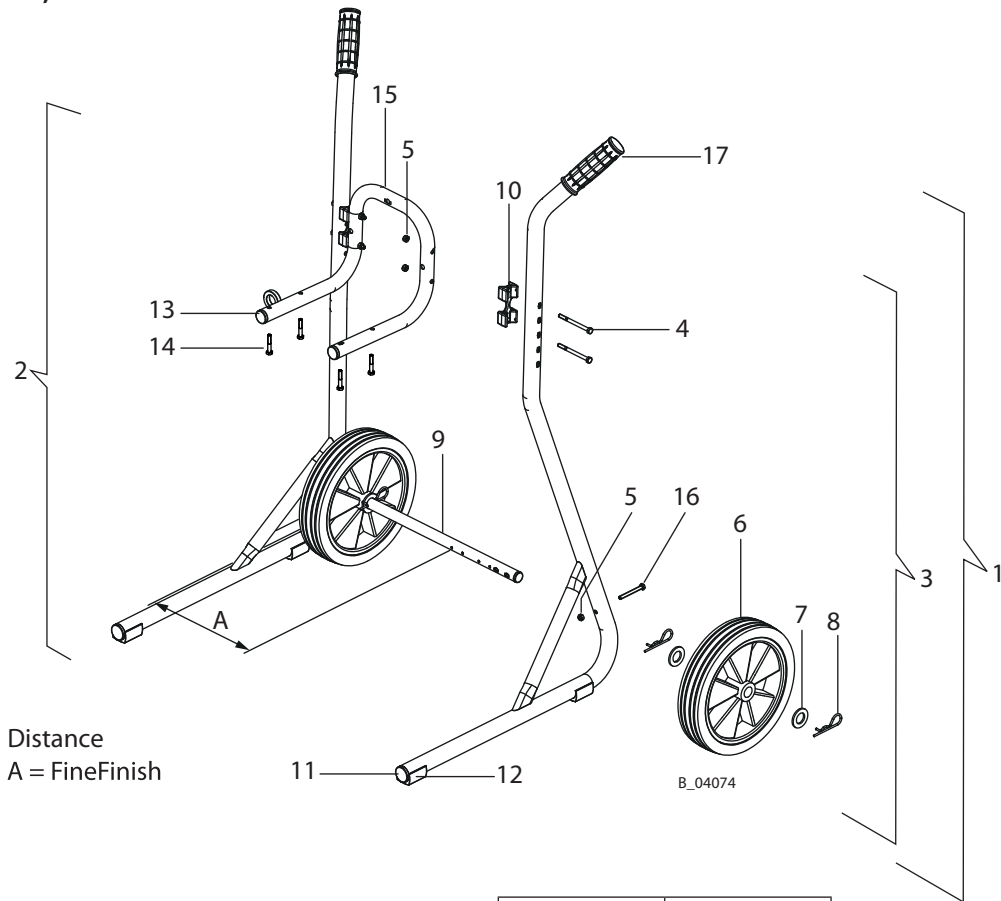


**Spare parts list for air regulator set for AirCoat Air**

Pos	K	Designation	Stk	FineFinish	FineFinish
				40-15	20-30
				Order No.	
1		AirCoat regulator set	1	T6145.00A	
2	◆	Pressure gage 0-1 MPa; 0-10 bar; 0-145 psi (d40)	1	9998677	
3		Elbow with taper	1	9992129	
4		Detachable double nipple	1	9998719	
5		T-piece	1	9985694	
6	◆	Air pressure regulator, 1/4"	1	P123.00	
7		Loctite 270	1	9992528	

◆ = Wearing part

**11.7 TROLLEY, 4"**



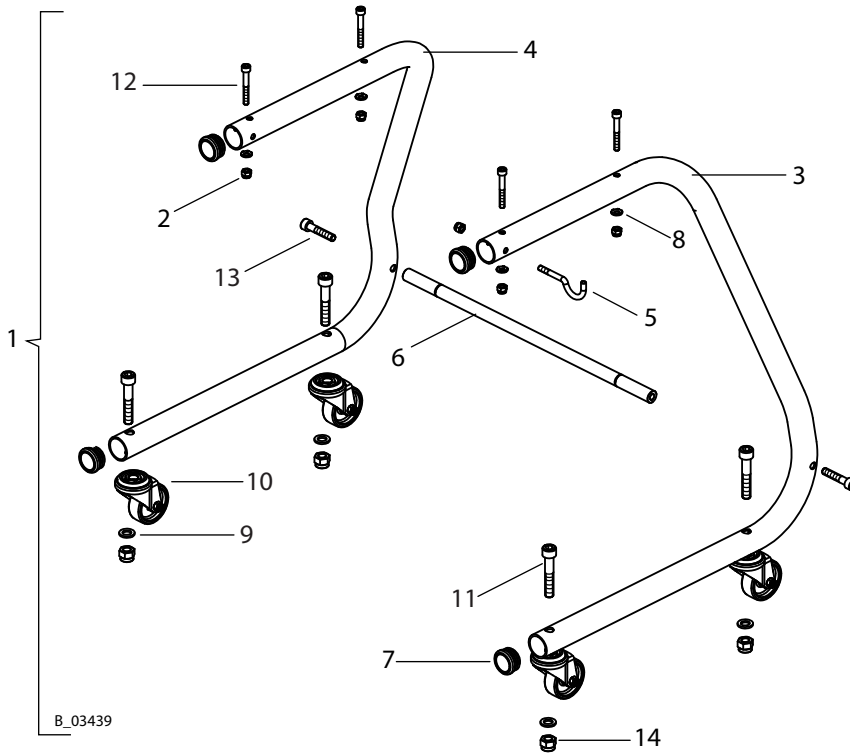
Distance  
A = FineFinish

**Spare parts list for trolley, 4"**

Pos	K	Designation	Stk	FineFinish	FineFinish
				40-15	20-30
				Order No.	
1		Trolley, complete	1		2325901
2		Stand left 4" (welded)	1		--
3		Stand right 4" (welded)	1		--
4		Hexagon screw DIN931 M6x75	4		9907140
5		Self-locking hexagon nut, M6	6		9910204
6	◆	Wheel, D250	2		2304440
7		Washer	4		340372
8		Cotter pin	4		9995302
9		Wheel axle 4"	1		--
10	◆	Connecting part 4"	2		367943
11		Tube plug, ribbed	2		--
12		Saddle feet for round tubes	2		--
13		Plug	2		--
14		Hexagon screw	4		9900218
15		Wall mount	1		2332143
16		Hexagon screw without shaft M6x55	2		3061695
17	◆	Handle	2		9998747

◆ = Wearing parts

**11.8 4-WHEEL TROLLEY**



Pos	K	Designation	Stk	FineFinish	FineFinish
				40-15	20-30
				Order No.	
1		Trolley, 4 wheels	1	T6196.00	
2		Hexagon nut with clamp	5	9910204	
3		Stand, right	1	E3107.92B	
4		Stand, left	1	E3107.92C	
5		Spray gun hook	1	H009.62	
6		Stand pin	1	H1156.62	
7		Plug	4	R204.07	
8		Contact washer, M08	4	3155404	
9		Washer	4	9920106	
10	◆	Wheel	4	R120.00F	
11		Hexagon socket head cap screw	4	9900311	
12		Hexagon socket head cap screw	4	9900389	
13		Hexagon socket head cap screw	2	9900309	
14		Hexagon nut with clamp	4	3055157	

◆ = Wearing part